

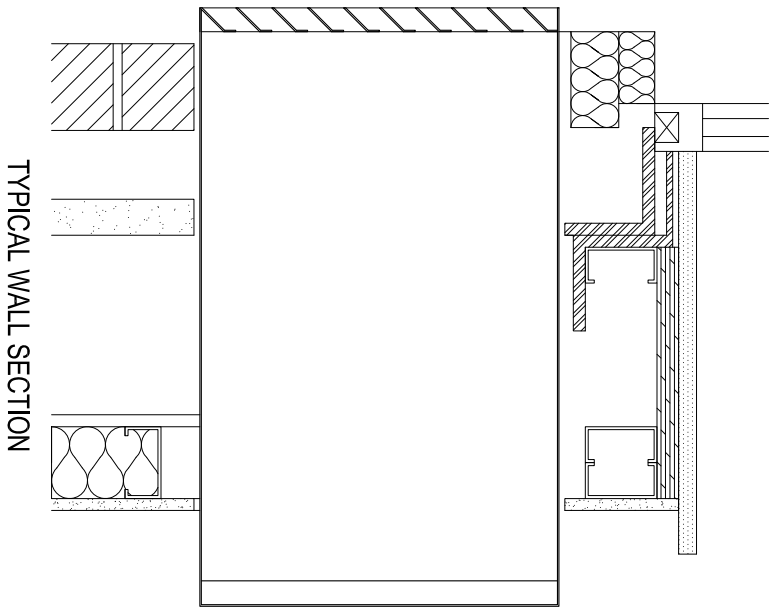
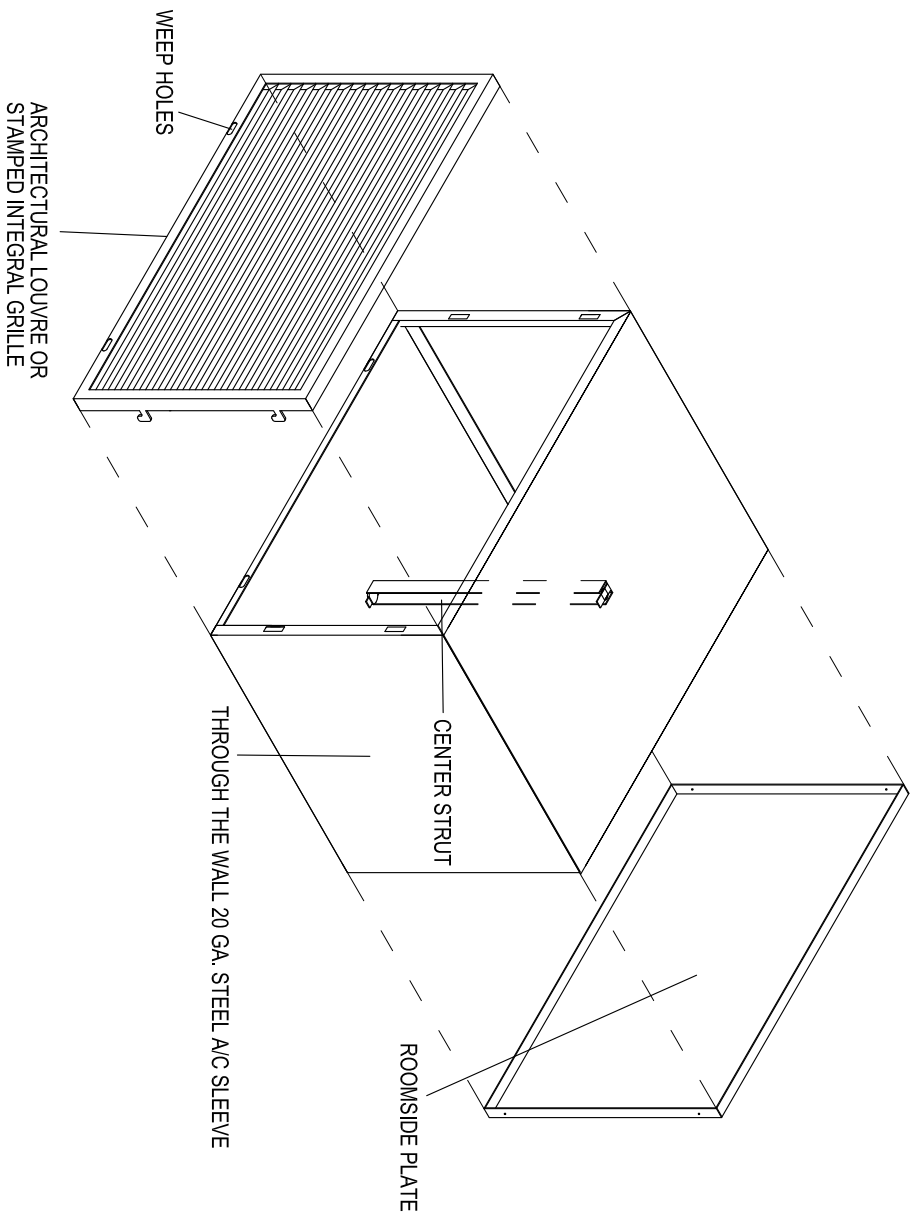
QTY

L x W x D

27" x 16 7/8" x 19 7/8"

NOTES:

- 20GA. GALVANNNEAL STEEL SLEEVE
- NO TRADEMARK ON LOUVRE OR PLATES
- PRE-PITCHED BOTTOM WITH WEEP HOLES
- VERTICAL CENTER STRUT FOR SUPPORT



INTERIOR METALS

255 48TH ST. BROOKLYN NY, 11220 (718) 439-7324

DATE:

IM-11A

TYPE TTW STANDARD A/C SLEEVE

JOB:

GC: